

**CancerCare**



**One Less Thing to Worry About**



**WOOD'S HOMECARE**

Personalised Homecare Services

**P 01539 303010**

**E [Info@woodshomecare.co.uk](mailto:Info@woodshomecare.co.uk)**

**W [woodshomecare.co.uk](http://woodshomecare.co.uk)**

**Wood's Homecare provides professional and personalised home care services for clients living in South Lakeland and the surrounding areas.**

**We deliver the highest quality of care and create tailored care packages to people of all ages whilst living within the comfort of their own homes.**

**We have experience of caring for those living with dementia, physical disabilities, learning and development disabilities, mental health related illnesses and old age.**

**In addition to our personalised care, we recognise the importance of those caring for their loved ones. We are able to provide short and long term respite care, holiday and sickness cover.**

**If you or a loved one are thinking about care and want to know how we can help, please do not hesitate to get in touch with a member of Wood's Homecare.**

**Personalised  
Homecare Services**



# Hello

---

Hello and welcome to what we hope you will find is a really useful booklet.

Many of us spend most of our lives planning ahead, but many people find it difficult to think about planning for what might happen at the end of our life, or even after our death. However, putting our affairs in order can help us to stay in control and ensure our wishes are carried out.

This booklet is designed to help you think about plans for the future to give you and your family real peace of mind.

---

**CancerCare North Lancashire & South Cumbria**

[www.cancercare.org.uk](http://www.cancercare.org.uk)

**Lancaster:** Slynedales, Slyne Road, Lancaster, LA2 6ST

**Kendal:** Lakes Centre, Blackhall Road, Kendal, LA9 4BT

**Barrow:** Furness Centre, 76 Duke Street, Barrow, LA14 1RX

**Morecambe:** 34 Northumberland Street, Morecambe. LA4 4AY

Registered Charity Number 1120048

Registered with



**FUNDRAISING  
REGULATOR**





## Proudly supporting CancerCare

Leck Construction Ltd is one of the area's leading and most experienced, privately owned, construction and housing development companies, operating within South Cumbria, The Lake District National park, and Furness Peninsula.

For over seventy years, the Leck name has been synonymous with building quality. We have an outstanding portfolio of completed projects and we are very proud that our skills, knowledge, and expertise creates value for our clients.

Whether you're looking for a contractor or house builder, we are here to help. Leck are currently developing 36 modern family houses at Solway Drive, Walney. Visit our website **[www.leckconstruction.co.uk](http://www.leckconstruction.co.uk)** for more details.

**Tel: 01229 820394 Email: [admin@leck.co](mailto:admin@leck.co)**

**Leck House, Ironworks Road, Barrow-in-Furness, LA14 2PQ**

# LECK

Construction Ltd



# Making a Will

---

**Making a Will is one of the most important things you can do to ensure that your wishes are carried out and that your loved ones are provided for in future.**

It is also a really kind thing to do, so that it is easier for your family or friends to sort everything out after your death. Without a Will, this process can be even more stressful and could take a lot longer.

Your Will tells people:

- Who should have your money, property and possessions when you die.
- Who will be your 'executor' - the person(s) in charge of following the instructions you leave in your Will and organising your estate.

You can also use your Will to tell people about any other wishes you might have, like instructions for your burial, cremation or funeral.

Without a Will, your money, property and possessions will be shared out according to the law instead of according to your wishes. This could mean that things are passed on to someone you hadn't intended or that someone who you want to provide for could end up with nothing at all.

Whether you have lots of money, no money, lots of family or no family at all, making a Will is a good idea.



JAMES CROPPER PLC

ESTABLISHED 1845

PROUD TO  
SUPPORT  
CANCERCARE  
AND THE PEOPLE  
OF CUMBRIA

[JAMESCROPPER.COM](http://JAMESCROPPER.COM)



# How to make a Will

---

Before you meet with a solicitor or Will writer to start making a Will, you might like to write down what you have – your house, car, furniture, saving plans, bank accounts etc.

You might also like to make a record of everyone you would like to include in your Will.

You can use the checklist overleaf to jot these things down and you may want to take it with you to your appointment with your solicitor or Will writer. There are also a few additional pages at the back of this booklet that you can use for further notes.







The  
**Independent Asset Management**  
Company

# Passionate about your investments

- Investment advice and portfolio management
- Retirement and planning your pension
- Inheritance tax
- Trustees and trustee investment
- Wealth management



VICTORIA HOUSE, MAIN STREET, GRANGE-OVER-SANDS, LA11 6DP

**T** 015395 38833 | **E** ENQUIRIES@IAMCOMPANY.CO.UK | **W** WWW.IAMCOMPANY.CO.UK

The Independent Asset Management Company is authorised and regulated by the Financial Conduct Authority.

The  
**Independent Asset Management**  
Company

# Checklist

---

## Assets

Home	£ .....
Other property	£ .....
Household contents (insurance value)	£ .....
Valuables (insurance value)	£ .....
Furniture/antiques (insurance value)	£ .....
Jewellery (insurance value)	£ .....
Car(s) (resale value)	£ .....
Savings and cash	£ .....
(including bank and building society accounts)	
Stocks and shares (market value)	£ .....
Other investments	£ .....
Pension benefits	£ .....
Life insurance (if you died now)	£ .....
Any other investments	£ .....
Any other assets	£ .....
<b>TOTAL ASSETS</b>	<b>£ .....</b>

The following checklists will give you an idea of the value of your estate and can also help you make a record of loved ones you would like to include in your Will. You may wish to complete the form and take it with you when you discuss making or changing your Will with your solicitor or Will writer.

## Liabilities

Mortgage	£ .....
Bank and building society loans	£ .....
Hire purchase agreements	£ .....
Bank overdrafts	£ .....
Credit cards	£ .....
Tax owed	£ .....
Any other bills	£ .....
<b>TOTAL LIABILITIES</b>	<b>£ .....</b>

Value of your Estate (total assets minus total liabilities):

£ .....

#brilliant  
**BARROW**



**BOROUGH OF  
BARROW  
IN FURNESS**

**PROUDLY SUPPORTING CANCERCARE  
BARROW**

**A GREAT PLACE TO LIVE, WORK AND VISIT**





## FAQs

---

### Here are some frequently asked questions about Wills

#### **Q: Why make a Will?**

It makes things much easier for your family or friends to sort everything out when you die. Without a Will, the process can be more time-consuming and stressful at what is an already difficult time. Without a Will, everything you own is shared out in a standard way defined by the law. A properly planned Will can help reduce the amount of Inheritance Tax that may be payable on the value of the property and money that you leave behind. This is especially important if you have children or family who depend on you financially, or if you want to leave something to people or an organisation outside your immediate family, such as CancerCare.

#### **Q: Is making a Will difficult and expensive?**

Making a Will is easy, quick and inexpensive. Your solicitor or Will writer will send you a list of the things that you need to think about before you meet with them or may ask you to start filling out a form about what you want to achieve in regards to your Will. That way, you can work through at home what you own, what you want to leave, who you want to leave it to and who you want to appoint as your executor(s). CancerCare work in partnership with a number of local solicitors and Will writers who are able to help you when writing or amending a Will. Contact us on 01524 381820 to find out more about the CancerCare Will Writing Service.

Designer  
Fabric  
Outlet



01524 598222

[www.designerfabricoutlet.co.uk](http://www.designerfabricoutlet.co.uk)  
Caton Road, Lancaster, LA1 3PA

Proud to support CancerCare



Designer seconds, fabrics, wallpapers & accessories

# FAQs

---



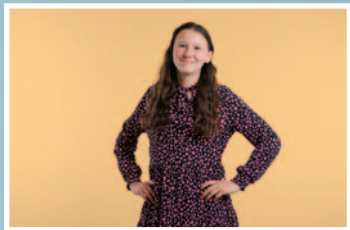
## **Q: How do I write my Will?**

You can use a solicitor or the services of a Will writer. If you chose a Will writer, we would recommend that you choose one that is a member of The Society of Will writers or The Institute of Professional Will writers, both of whom ensure their members are fully qualified, fully insured, and follow a code of compliance. Whoever you choose, you may want to seek references or recommendations.

## **Q: How often should I update my Will?**

It's a good idea to regularly review your Will so that it continues to reflect changes in your life. It's important that you don't write on an existing Will. Ask your solicitor or Will writer about making changes to an existing Will, or writing a new one.





# Leaving a gift in your Will

---

## Leaving a Gift in your Will to CancerCare

CancerCare have been supporting families affected by cancer and bereavement across North Lancashire & South Cumbria since 1983. A gift in your Will can help make sure that support will be there for future generations of our local community facing the impact of cancer or loss.

---

**“I can never repay CancerCare for everything they did for my sister and what they're now doing for me and my family. It's so important that the CancerCare lifeline is there for many years to come to support anyone who needs their help, their therapies, and their friendship, and to never feel alone. That's why I've chosen to leave a gift in my Will to CancerCare.”**

Annie (CancerCare client and supporter)

---

Of course, we understand that when making a Will, the needs of your family and loved ones will always come first. However, once you've looked after those closest to you, leaving a gift to CancerCare could make an amazing difference to the lives of many more people; people in our community whose lives are affected by cancer or bereavement.

You can pledge any sum of money or a small percentage in your Will – even a gift of 1% will make a real difference.

## All your solicitor needs:

- Name of our charity
  - CancerCare North Lancashire & South Cumbria
- Registered Charity Number – 1120048



We offer a fast, friendly and very reliable service for skip hire throughout Furness and the South Lakes

We supply PAS100 Compost and Top Soil



Sinkfall Recycling  
Sinkfall Farm, Rakesmoor Lane,  
Barrow in Furness, Cumbria LA14 4QE  
Telephone: **01229 465000** Mobile: **07793 324897**  
Email: **info@sinkfall-recycling.com**  
Website: **www.sinkfall-recycling.com**

**L&W.WILSON**  
(ENDMOOR) LTD

A family business for over 60 years

Based in Endmoor, L & W Wilson undertake commercial, industrial and residential schemes for clients throughout Cumbria and Lancashire.

**Proudly supporting CancerCare**



**www.landwwilson.co.uk**

T: 01539 567601 E: office@landwwilson.co.uk  
Gatebeck Rd, Endmoor, Cumbria, LA8 0HL





## FAQs

---

**Here are some frequently asked questions about making a gift in your Will**

**Q: Are there different ways I can leave a gift to CancerCare?**

Yes, there are three main ways you can remember CancerCare in your Will.

**The 'Family and Friends First' Legacy**

At CancerCare, we understand that caring for your family is a priority. After making provision for your family and friends, you can choose to leave whatever is left in your estate – the residue – to CancerCare alone or you could choose to share it between CancerCare and other organisations close to your heart.

**Cash Legacy**

You might choose to make a gift of a set value to CancerCare. These gifts may decrease in value over time, for example £1,000 pledged in your Will written now may not be worth as much in real terms in 10 or 20 years' time. However, you can specify in your Will for your gift to be index-linked, which means it would increase in line with inflation.

**Legacy in Kind**

Some people choose to leave specific assets such as property, stocks and shares or other valuable items like jewellery or paintings that their family do not want or need. If you have a specific item that you are thinking about gifting to CancerCare in your Will, please do talk to us so that we can ensure the charity makes use of it in a way with which you are happy.

# Hollow Oak

## NURSING HOME LTD

Hollow Oak Nursing Home is a family run private nursing home offering extensive facilities and services, and an exceptional standard of care. All within in a beautiful Victorian residence within its own 4 acre landscaped grounds.



015395 31246 | [www.hollowoaknursinghome.co.uk](http://www.hollowoaknursinghome.co.uk)

Hollow Oak Nursing Home Ltd. Haverthwaite, Ulverston, Cumbria, LA12 8AD



## Thomson Hayton Winkley are proud supporters of CancerCare

- Making and updating wills
- Lasting Powers of Attorney
- Advance Directives
- Inheritance Tax planning
- Succession planning
- Elderly client services
- Trusts

Trusted Solicitors & Advisers  
**Thomson Hayton Winkley**

[www.thwlegal.co.uk](http://www.thwlegal.co.uk)



Kendal T: 01539 721945 Kirkby Lonsdale T: 015242 71222  
Windermere T: 015394 46585 Rural Law Practice T: 015395 67571  
Appointments also available at THW Estate Agents, Grange T: 015395 33335

## FAQs

---

### **Q: What if I want to amend an existing Will?**

If you have already made a Will and decide you would now like to include a gift to CancerCare, you can make a change at any time by simply adding what is called a codicil. A solicitor or professional Will writer can advise you on this and make you aware of all the options. You should avoid making changes to your existing Will without first seeking professional advice, as you could accidentally render it invalid and void.

### **Q: What about tax?**

Gifts in Wills are tax efficient. The threshold at which inheritance tax kicks in changes from time to time. If your estate is going to attract inheritance tax, any gift you leave to charity will be deducted from your estate before any tax liability is calculated. So, if your estate is £20,000 over the amount allowed as tax free and you leave CancerCare £2,000, then inheritance tax will only be payable on £18,000. Everyone's tax situation is different, but your solicitor or Will writer will be able to tell you more about the ways charitable giving may reduce inheritance tax on your estate. Correct at the time of printing – Jan 2022.



WAX LYRICAL  
ENGLAND

Home fragrances crafted in the English Lake District  
*[www.waxlyrical.com](http://www.waxlyrical.com)*



## PROUD TO SUPPORT CANCERCARE

- New Memorials • Added Inscriptions • Renovation
- Pet Memorials • House Name & Number Plaques

We also offer home calls for those who find it difficult to call at the showroom.

**Telephone:** 01229 584242 **Mobile:** 07876 455058

**Email:** [phil@atkinsonsmemorials.co.uk](mailto:phil@atkinsonsmemorials.co.uk)

**[www.atkinsonsmemorials.co.uk](http://www.atkinsonsmemorials.co.uk)**

QUARRY PRODUCTS  
 NEW & RECYCLED AGGREGATES  
 READY MIX CONCRETE  
 CONCRETE BLOCKS  
 INERT WASTE  
 PLANT HIRE & HAULAGE  
 CONTRACTING



**BURLINGTON**  
AGGREGATES

[www.BurlingtonAggregates.co.uk](http://www.BurlingtonAggregates.co.uk)

Bouthwood Road Barrow-in-Furness Cumbria LA14 4RD  
 T 01229 839 966 F 01229 814 310 E: [office@BurlingtonAggregates.co.uk](mailto:office@BurlingtonAggregates.co.uk)



# Thank you

---

## Thank you for letting us know your intentions

We understand that the details of your Will are a personal matter. However, if you would like to let us know that you have already made a gift to CancerCare in your Will, we would like to thank you personally and invite you to be kept informed about our work.

Please be assured that any information you provide will be treated with the utmost respect and strict confidentiality.

### Please tick all relevant boxes:

- ☐ I have already included a gift in my Will to CancerCare
- ☐ I intend to leave a gift in my Will to CancerCare
- ☐ I am considering leaving a gift in my Will to CancerCare
- ☐ I would like to discuss this with a member of the CancerCare team.

Please use this space to include any further details you would like to add \_\_\_\_\_  
\_\_\_\_\_  
\_\_\_\_\_

CancerCare will not pass your information on to third parties for marketing purposes without your permission. Occasionally we may contact you by email or post about how you can support us further. Please tick here\* ☐ if you do not want us to contact you for these purposes or email [fundraising@cancercare.org.uk](mailto:fundraising@cancercare.org.uk) or call 01524 381820.

\*ticking this box will mean all current communications from the CancerCare fundraising team will stop

Name \_\_\_\_\_

Address \_\_\_\_\_

Postcode \_\_\_\_\_

Email \_\_\_\_\_

Telephone \_\_\_\_\_



**FERNCROSS CARE LTD**

**PROUD TO  
SUPPORT  
CANCERCARE**

4 CROSSDALE AVENUE, HEYSHAM,  
LANCASHIRE, LA3 1PE  
TEL: 01524 855782  
WWW.FERNCROSSCARE.CO.UK

**DENBY & CO.**  
— SOLICITORS —

It is important to get  
your affairs in order and  
our experts can advise  
you on wills, probates  
and tax planning.



As one of Cumbria's leading  
law firms, Denby & Co  
has been serving the people  
of Furness since 1960.

119 Duke Street, Barrow-in-Furness,  
Cumbria LA14 1XE

Tel: 01229 822366 Fax: 01229 870109

Ellers House, Ulverston, Cumbria LA12 7LT

Tel: 01229 582283 Fax: 01229 581129

**info@denbyco.co.uk**  
**www.denbyco.co.uk**



**Church Walk Veterinary Centre**

**PROUD TO SUPPORT  
CANCERCARE**

St Mary's Place,  
Ulverston LA12 7EN

**Telephone: 01229 583675**

**Opening Times Ulverston:**

Mon - Fri 9am - 6.30pm,  
Saturday 9am - 12pm

**Appointments:**

Mon - Fri 9am - 11am & 2.30pm - 6pm,  
Saturday 9am - 12pm

*A modern well-equipped practice, providing  
a comprehensive caring service*

30/32 Crellin Street,  
Barrow in Furness LA14 1DU

**Telephone: 01229 829863**

**Opening Times Barrow:**

Mon - Fri 9am - 6.30pm

**Appointments:**

Mon - Fri 9am - 12pm & 2pm - 6pm

# Power of Attorney

---

A Lasting Power of Attorney is a legal document that allows you to appoint someone you know and trust to make decisions on your behalf, should you become unable to do so in the future.

You must have the capacity to make your own decisions when you set up a Power of Attorney, so it's a good idea to get it set up well before you need it. It's much harder and more expensive for someone to help you with your money and property if you've already lost mental capacity.

## **There are two types of Lasting Attorney:**

### **Health & Welfare**

This allows someone to make decisions about your health, care and welfare, for example, what medical treatment you receive and whether you move into a care home.

### **Property & Financial Affairs**

This allows someone to manage all your financial affairs, including paying bills, managing bank accounts, collecting benefits and selling property or investments.

You should make sure you understand all the implications of setting up a Power of Attorney and you might want to get advice from a solicitor or Will writer.

# Notes



# Notes

# TONY BROWN LTD



**READY MIXED CONCRETE**

• SOIL & STONE SUPPLIERS •



**Tel 01229 588301**  
**Mobile 07803 966110**

[www.tonybrownaggregatesltd.co.uk](http://www.tonybrownaggregatesltd.co.uk)



**Atlas Removal Services Ltd.**  
OF MORECAMBE

*From a small local part load to a complete house across the world, trust Atlas Removals*



Atlas Removal Services Ltd.  
Unit 4a-5a, Major Industrial Estate,  
Middleton Road, Heysham, near Morecambe LA3 3NT

Telephone: **01524 859668**  
Email: [atlasremovalservices.co.uk](mailto:atlasremovalservices.co.uk)

[www.atlasremovalservices.co.uk](http://www.atlasremovalservices.co.uk)

**ACRASTYLE LIMITED**

Protection & Control for Your Power Systems



**PROUD TO SUPPORT  
CANCERCARE**

Acrastyle Limited  
North Lonsdale Road, Ulverston, Cumbria LA12 9EB  
Tel: 01229 583232

[www.acrastyle.co.uk](http://www.acrastyle.co.uk)

Official Partner



Registered with  
**FUNDRAISING  
REGULATOR**

FOR A TRULY UNIQUE

# tailored

**PUBLISHING SOLUTION**

**AT ABSOLUTELY NO COST TO YOU**



**majestic**

PUBLICATIONS LTD

5 minerva court | chester west employment park | chester CH1 4QT  
tel » 01244 **852360** | fax » 01244 852361  
email » [jane.montague@majesticpublications.co.uk](mailto:jane.montague@majesticpublications.co.uk) | [www.majesticpublications.co.uk](http://www.majesticpublications.co.uk)

# Notes

# MELVILLE & CO

## Chartered Accountants

*Accounting experts you can count on*

**PROUD TO SUPPORT CANCERCARE**

*For all your Personal and Business Tax matters  
including Inheritance Tax and Planning  
We are here to help*

**Please contact us for a no obligation  
FREE initial quotation**

**Tel: 01229 434000**

**info@melville18.co.uk | www.melville18.co.uk**

Units 17-18, Trinity Enterprise Centre,  
Ironworks Road, Barrow-in-Furness LA14 2PN

*Supporting & Advising Businesses Since 1987*



Mossop Monumental Masons Limited  
are proud to support the  
fantastic work of CancerCare



Office showroom and works:

Mossop Monumental Masons Limited  
St Margaret's,  
48 Ulverston Road,  
Dalton-in-Furness,  
Cumbria LA15 8EF

Telephone: **01229 462714**

Email: [care@mossopmemorials.co.uk](mailto:care@mossopmemorials.co.uk)

[www.mossopmemorials.co.uk](http://www.mossopmemorials.co.uk)

**GADSDEN CONSULTING**  
CIVIL & STRUCTURAL ENGINEERS

WORKING ACROSS  
FURNESS, MORECAMBE BAY  
AND THE LAKE DISTRICT

**(01229) 813333**

[www.mpg-consulting.co.uk](http://www.mpg-consulting.co.uk)

Unit 20, Meetings Industrial Estate,  
Park Road, Barrow-in-Furness,  
Cumbria, LA14 4TL



**MAJESTIC PUBLICATIONS LTD**

Tel: 01244 852360

[majesticpublications.co.uk](http://majesticpublications.co.uk)

All rights reserved © 2022

**UAB**

Majestic Publications  
cannot be held responsible for  
any inaccuracies that may occur  
or individual products or  
services advertised.



# Notes

# CancerCare

Registered Charity Number: 1120048

**CancerCare North Lancashire & South Cumbria**

[www.cancercare.org.uk](http://www.cancercare.org.uk)

**Lancaster:** Slynedales, Slyne Road, Lancaster, LA2 6ST

**Kendal:** Lakes Centre, Blackhall Road, Kendal, LA9 4BT

**Barrow:** Furness Centre, 76 Duke Street, Barrow, LA14 1RX

**Morecambe:** 34 Northumberland Street, Morecambe. LA4 4AY



Registered with  
**FUNDRAISING  
REGULATOR**



FURNESS  
BRICK

ESTABLISHED 1845

CREATING  
TOMORROW'S HERITAGE  
TODAY

[WWW.FURNESSBRICK.CO.UK](http://WWW.FURNESSBRICK.CO.UK)





# BellLancaster<sup>Ltd</sup>

## Fire & Security

Fire Alarms  Emergency Lighting Services  Fire Extinguisher Services

Kitchen Fire Extinguishant Systems  Fire Fighting Risers / Hydrants / Hose Reels

Fire Smoke Control Systems  CCTV & Security Systems  Access Control Systems

Bell Lancaster Limited Training Services & Training Courses

Fire Safety Consultancy  Fire Risk Assessments

**We are proud to support the incredible work of CancerCare**

Bell Lancaster Limited

The Meadows, Hampson Lane, Ellel, Lancaster, LA2 0HY

Telephone: 01524 751 630 Email: [info@bell-lancaster.co.uk](mailto:info@bell-lancaster.co.uk) Website: [www.bell-lancaster.co.uk](http://www.bell-lancaster.co.uk)